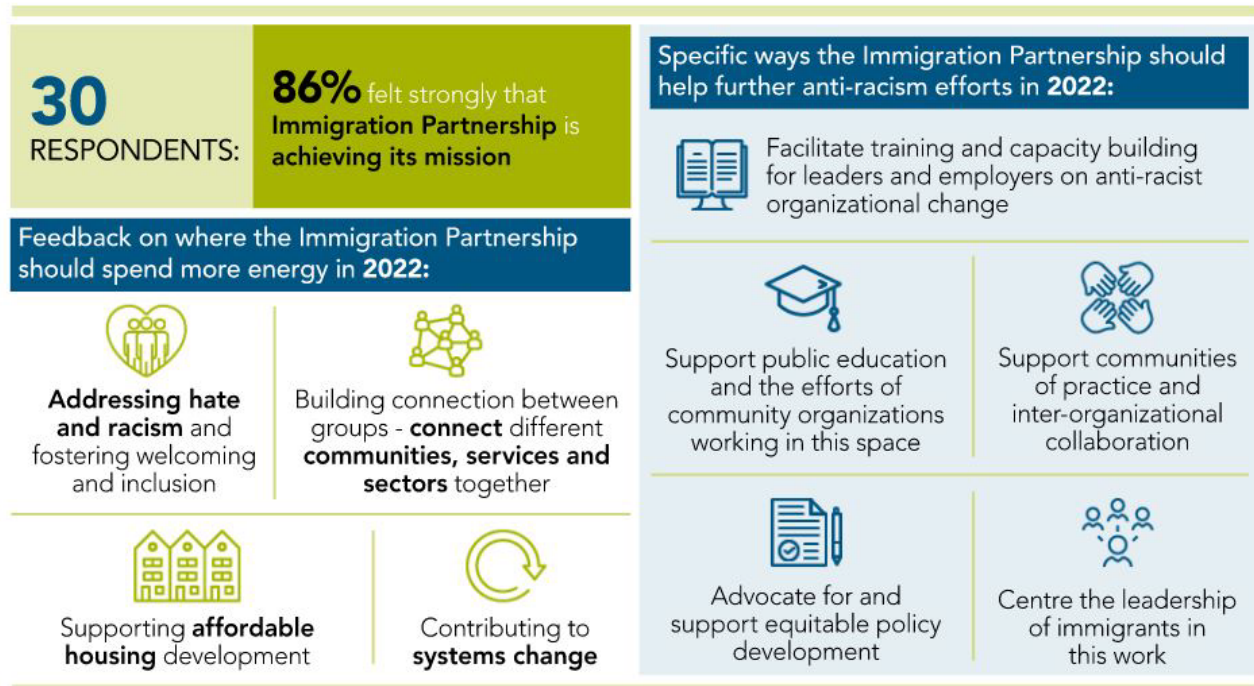


# Immigration Partnership Check-in Summary (2021)

This profile reflects partner reflections on the work of the Immigration Partnership, how we are making an impact and future priorities, shared in December 2021. Contact Immigration Partnership for more details.



Partners shared their thoughts on the most pressing challenges for their organization when it comes to immigration and supporting immigrant success, including: Post-pandemic support (both virtual and in-person services); Support for specific groups - Afghan, international students, etc.; Action against discrimination and promote diversity; Support for housing - high cost; Support for newcomers - settlement, connection; Support for immigrants' education.

There were many stories of how partners were impacted by their involvement with the Immigration Partnership. Some valued the recent antiracism, indigenous reconciliation or diversity trainings making them much more aware of racism and working with others to make change. Some valued the focus that our collective work brought to refugee needs or interpretation. Others appreciated the breadth of understanding they gained by working with groups involved in different sectors. Partners also valued opportunities for direct service staff to form relationships and network, or work together on collective projects like videos about the impact of housing for newcomers. Some mentioned the new relationships between partners and ethnocultural leaders – or between ethnocultural groups. Other partners shared more general comments: “My story is, through IP I felt that my work matters and we make an impact.”

To request an alternate format of this document, call 519-575-4400 or TTY: 519-575-4608.

For more information contact:

Waterloo Region Immigration Partnership  
226.750.7640  
ImmigrationPartnership@regionofwaterloo.ca  
www.immigrationwaterlooregion.ca